

BrewWISE® Dual GPR DBC® Brewer

Features



**Dual GPR DBC with
1.5 gallon GPR Servers**
Dimensions: 29.3 H x 18" W x 20" D
(74.4cm H x 45.7cm W x 50.8cm D)

BrewWISE Dual GPR DBC

- Brews 18.9 gallons (71.5 liters) of perfect coffee per hour.
- Brews ½, 1, or 1½ gallon (1.9, 3.8 or 5.7 liter) batches.
- Stores individual coffee recipes so operator can easily brew many varieties.
- Coffee extraction controlled with pre-infusion and pulse-brew, digital temperature control, and large sprayhead; coffee strength controlled with variable by-pass.
- Operate any combination of BrewWISE equipment error-free with wireless brewer-grinder interface through the Smart Funnel®.
- SplashGard® funnel and optional funnel locks help improve safety.
- Create coffee recipe cards with custom recipes, ad cards with messages that display on the brewer LCD, and dedicated funnels for special coffees with the BrewWISE Recipe Writer using your PC (Windows® compatible).
- BUNN warranty includes 3 years parts and labor on electronic control boards and 2 years parts and 1 year labor on all other components.
- Troubleshoot all switches and electrical components from the front panel with advanced diagnostic service tools.
- Programmable freshness indication.
- Message on display alerts when freshness timer expires and when warmers will automatically shut off.
- Programmable warmer control.
- Energy saver mode reduces tank temperature during idle periods.

For current specification sheets and other information, go to www.bunn.com.

Related Products

Easy Clear® EQHP-25L
Product No. : 39000.0002



Easy Clear® EQHP-25
Product No. : 39000.0005

Single/Dual Filter Pack
Product No. : 20138.0000
Packed per case: 500
Dimensions:



5¼" Base x 4¼" Sidewall
13.3 cm Base x 10.8 cm Sidewall

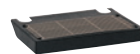
1.5 Gallon GPR FF Server
Product No. : 20950.0004
Dimensions:
18.1" H x 8.5" W x 12.7" D
32.3 cm H x 21.3 cm W x 32.3 cm D



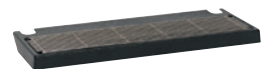
RWS 1 Stand
Product No. : 12203.0010
Dimensions:
7.5" H x 8.25" W x 9.3" D
27.2 cm H x 21.6 cm W x 21.6 cm D



RWS1 Drip Tray
Product No. : 20213.0103



Dual Drip Tray Kit
Product No.: 20213.0101I



Model MHG
(includes 2 hoppers)
Product No. : 35600.0000
Dimensions:
29.1"H x 9.36"W x 17.5"D
73.9cm Hx 23.8cm W x 44.5cm D



Model

Dual GPR DBC

Agency Listing



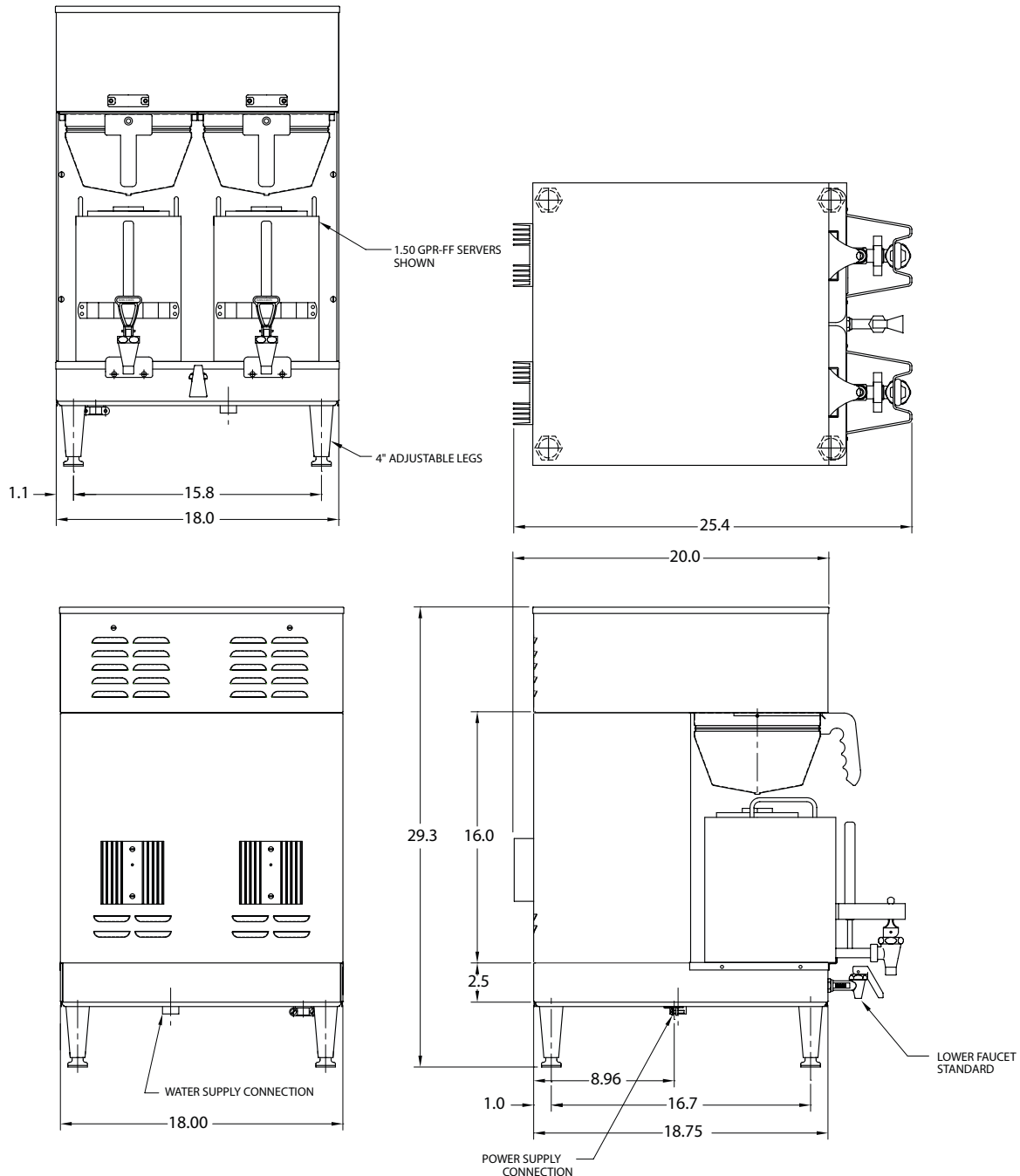
Dimensions & Specifications

Model	Product #	Volts	Amps	Total Watts	Brewing Cap-gal/hr	Cu. Ft.	Shipping Weight	Cord Attached
DUAL GPR DBC	35900.0010	120/208-240	26-29	5400-6800	14.8-18.9 gal/hr	13.3	90 lbs.	No
1.5 GPR FF Server	20950.0004	n/a	n/a	n/a	1½ gal.	2.4	18 lbs.	No
RWS1 Warmer	12203.0010	120	1	100	1 SH Server	1.2	13 lbs.	Yes

Brewing capacity: based upon incoming water temp of 60°F (140°F rise).

Electrical: Brewer is 3-wires plus ground service rated 120/208V or 120/240V, single phase, 60Hz.

Plumbing: 20-90 psi (138-621 kPa). Machine supplied with ⅜" male fitting.



Bunn-O-Matic® Corporation - 1400 Stevenson Drive Springfield, Illinois 62703 • 800-637-8606 • 217-529-6601 • Fax 217-529-6644 • www.bunn.com

BUNN® practices continuous product research and improvement. We reserve the right to change specifications and product design without notice. Such revisions do not entitle the buyer to corresponding changes, improvements, additions or replacements for previously purchased equipment.

All dimensions shown in inches.

1/11 © Bunn-O-Matic Corporation