

BUNN®

Silver Series™ 4-Flavor Gourmet Cold Beverage System

ITEM#

PROJECT

DATE



Model JDF-4S

(available with juice or iced coffee display)

Dimensions: 33.1"H x 15.7"W x 25.5"D

(84.1cm H x 39.9 cm W x 64.8cm D)

*width including door handle

Features

Gourmet Cold Beverage System

- A cost effective solution to providing your customers with superior performance in juice and other concentrated beverage dispensing.
- One dispenser delivers both frozen and ambient products increasing profits by lowering costs.
- Drink consistency assured with the BUNN patented High Intensity® mixing technology.
- Pumps and mixes 2+1 to 11+1 concentrated beverages, including 4+1 high viscosity and 5+1 juices accurately and consistently.
- Quick dispense with 1.0 to 1.5 ounces (29.6 to 44.4 ml) per second flow rate.
- 7" (17.8 cm) cup clearance accommodates most juice containers.
- 18 lb. (8.2 kg) ice bank provides superior cold drink capacity.
- Advanced concentrate pump designed for easy setup, accuracy and durability.
- Service-friendly design including two modular dispense decks makes service fast and simple.
- Both push-button and portion control in the same machine.
- Available with Iced Coffee or Juice display.
- Cold water dispense option available. See models listed on back.
- Door lock standard.
- Preventive maintenance kit: 39690.0000. **PMKIT**

For current specification sheets and other information, go to www.bunn.com.

Related Products

Easy Clear® EQHP-10

Product No. : 39000.0004



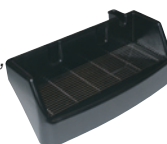
Easy Clear® EQHP-10CRTG

Product No. : 39000.1004

Extended Drip Tray

Product No. : 40789.1000

increases cup clearance to 10.25"



Ambient Conversion Kit

Product No.: 33699.0001

(one kit required per dispense station - photo shows 4-dispense station unit with one container and three ambient conversion kits)



Refillable Juice Container

Capacity: 1 Gallon

Product No.: 39302.0000



Model

JDF-4S

Agency Listing



Patents Apply

6/08

D7.1

Dimensions & Specifications

Model	Product #	Volts	Amps	Capacity	Cubic Measure	Shipping Weight	Cord Attached
JDF-4S	37300.0000	120	6	3 (12 oz.) drinks/min*	10.3 ft ³	129 lbs.	Yes [†]
JDF-4S	37300.0002	120	6	3 (12 oz.) drinks/min*	10.3 ft ³	129 lbs.	Yes [†]
<i>(with cold water dispense)</i>							
JDF-4S	37300.0013	120	6	3 (12 oz.) drinks/min*	10.3 ft ³	129 lbs.	Yes [†]
<i>(iced coffee display)</i>							
JDF-4S	37300.0016	120	6	3 (12 oz.) drinks/min*	10.3 ft ³	129 lbs.	Yes [†]
<i>(iced coffee display, cold water dispense)</i>							

Models include air filter

Refillable Juice Container Product No.: 39302.0000 Capacity: 1 Gallon

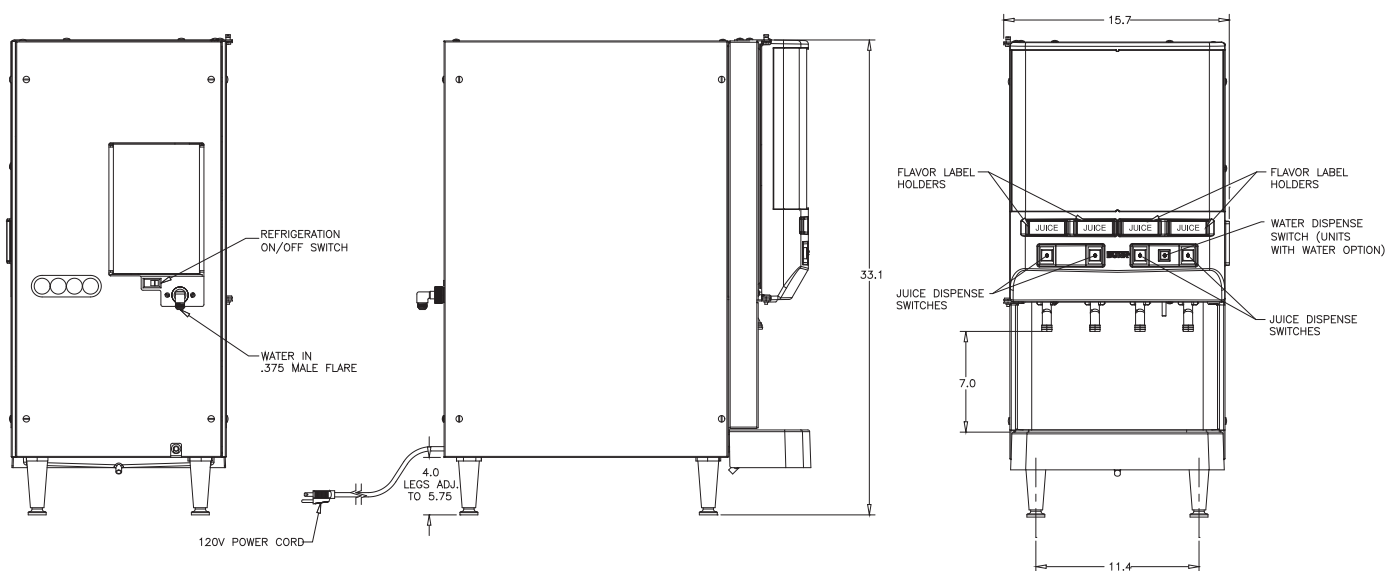
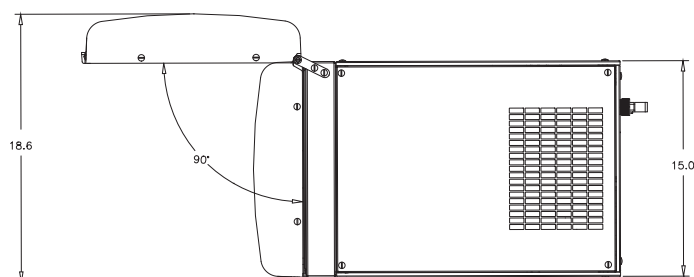
* 75°F (24°C) incoming water for 145 drinks without exceeding 41°F (5°C) finished drink temperature.

[†]Power cord (NEMA 5-15P) 15 Amp-120V machine only.

Electrical: Model requires 2-wire grounded service rated 120V, single phase, 60 Hz.

Plumbing: 20-100 psi (138 - 690 kPa). Machine supplied with $\frac{3}{8}$ " male fitting.

Refrigeration: R-134a refrigerant, 9 oz. (.28 kg), 8 lb. (3.6 kg) ice bank system



Bunn-O-Matic® Corporation - 1400 Stevenson Drive Springfield, Illinois 62703 • 800-637-8606 • 217-529-6601 • Fax 217-529-6644 • www.bunn.com

BUNN® practices continuous product research and improvement. We reserve the right to change specifications and product design without notice. Such revisions do not entitle the buyer to corresponding changes, improvements, additions or replacements for previously purchased equipment.

All dimensions shown in inches.

6/08 © Bunn-O-Matic Corporation